

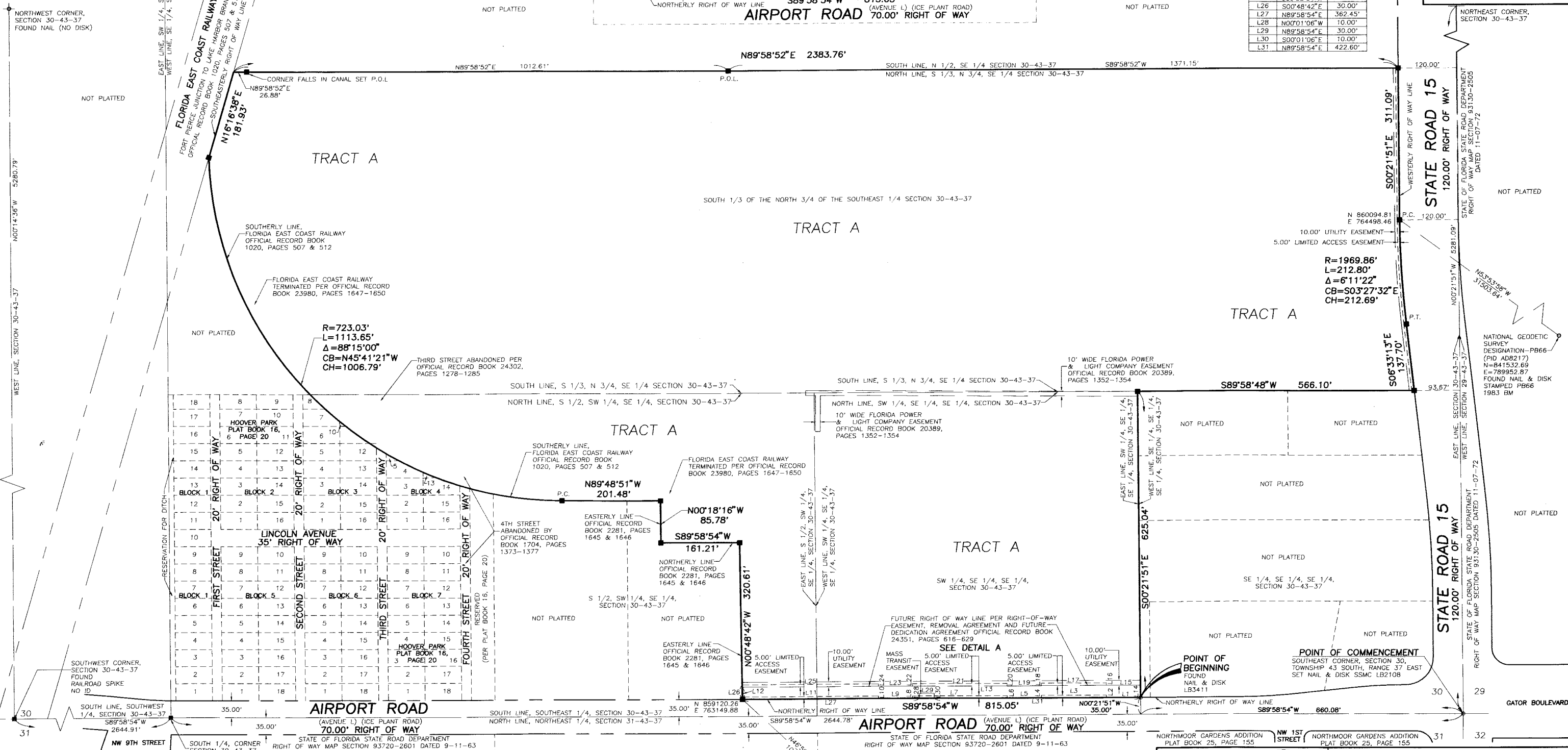
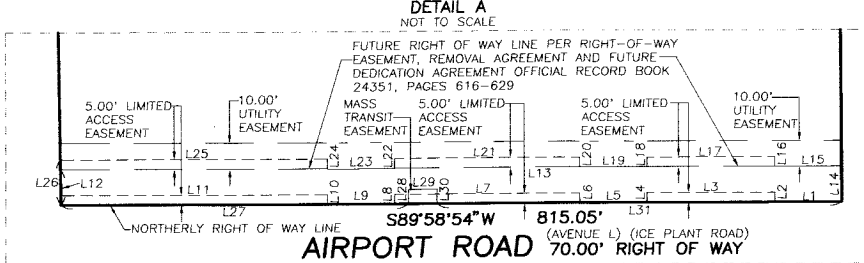
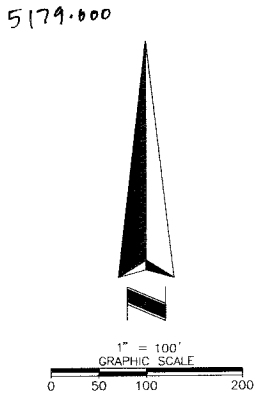
48

PIONEER GROWERS

A REPLAT OF A PORTION OF BLOCK 3, BLOCK 4, AND RESERVED, HOOVER PARK AS RECORDED IN PLAT BOOK 16, PAGE 20, PUBLIC RECORDS OF PALM BEACH COUNTY, FLORIDA AND A PORTION OF THE SOUTHEAST 1/4 OF SECTION 30, TOWNSHIP 43 SOUTH, RANGE 37 EAST, PALM BEACH COUNTY, FLORIDA

SHEET 2 OF 2

LINE	BEARING	LENGTH
L1	S89°58'54"W	70.00'
L2	N00°01'06"W	5.00'
L3	S89°58'54"W	133.22'
L4	S00°01'06"E	5.00'
L5	S89°58'54"W	70.00'
L6	N00°01'06"W	5.00'
L7	S89°58'54"W	193.65'
L8	S00°01'06"E	5.00'
L9	S89°58'54"W	70.00'
L10	N00°01'06"W	5.00'
L11	S89°58'54"W	278.25'
L12	N00°48'42"W	25.00'
L13	N89°58'54"E	815.25'
L14	S00°21'51"E	25.00'
L15	S89°58'54"W	69.85'
L16	N00°01'06"W	5.00'
L17	S89°58'54"W	133.22'
L18	S00°01'06"E	5.00'
L19	S89°58'54"W	70.00'
L20	N00°01'06"W	5.00'
L21	S89°58'54"W	193.65'
L22	S00°01'06"E	5.00'
L23	S89°58'54"W	70.00'
L24	N00°01'06"W	5.00'
L25	S89°58'54"W	278.58'
L26	S00°48'42"E	30.00'
L27	N89°58'54"E	362.45'
L28	N00°01'06"W	10.00'
L29	N89°58'54"E	30.00'
L30	S00°01'06"E	10.00'
L31	N89°58'54"E	422.60'



LEGEND & ABBREVIATIONS

R = RADIUS
 L = LENGTH
 Δ = CENTRAL ANGLE
 CB = CHORD BEARING
 CH = CHORD DISTANCE

■ = DESIGNATES A PERMANENT REFERENCE MONUMENT, BEING A SET 4" X 4" CONCRETE MONUMENT WITH BRASS DISC STAMPED "P.R.M. LS4245", UNLESS OTHERWISE NOTED.
 ○ = NAIL & DISK

"NOTICE": THIS PLAT, AS RECORDED IN ITS GRAPHIC FORM, IS THE OFFICIAL DEPICTION OF THE SUBDIVIDED LANDS DESCRIBED HEREIN AND WILL IN NO CIRCUMSTANCES BE SUPPLANTED IN AUTHORITY BY ANY OTHER GRAPHIC OR

ALL DISTANCES AS SHOWN HEREON ARE HORIZONTAL GROUND/SURFACE DISTANCES SCALED BY AN AVERAGE SCALE FACTOR OF 0.999954321



PIONEER GROWERS	
Project Number 53849	Drawing Number 53849011
Scale: 1"=100' Drawn By: S.S.	